

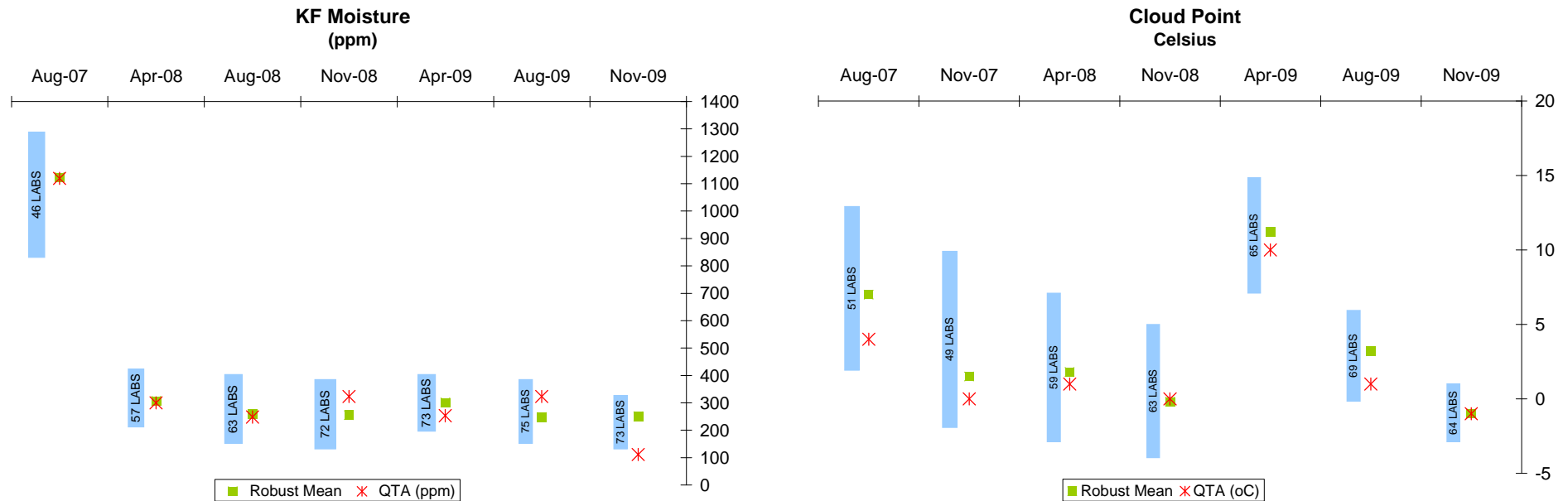


The QTA® System participation in ASTM's Interlaboratory Crosscheck Program

Three times a year, the QTA System participates in the ASTM Interlaboratory Crosscheck Program (ILCP). As many as 70 biodiesel laboratories participate in the ILCP, a program which enables each lab to see how their results compare with other labs. While there is no "right" answer provided by ILCP, it can be inferred that the mean result of these labs is close to the target or "right" result.

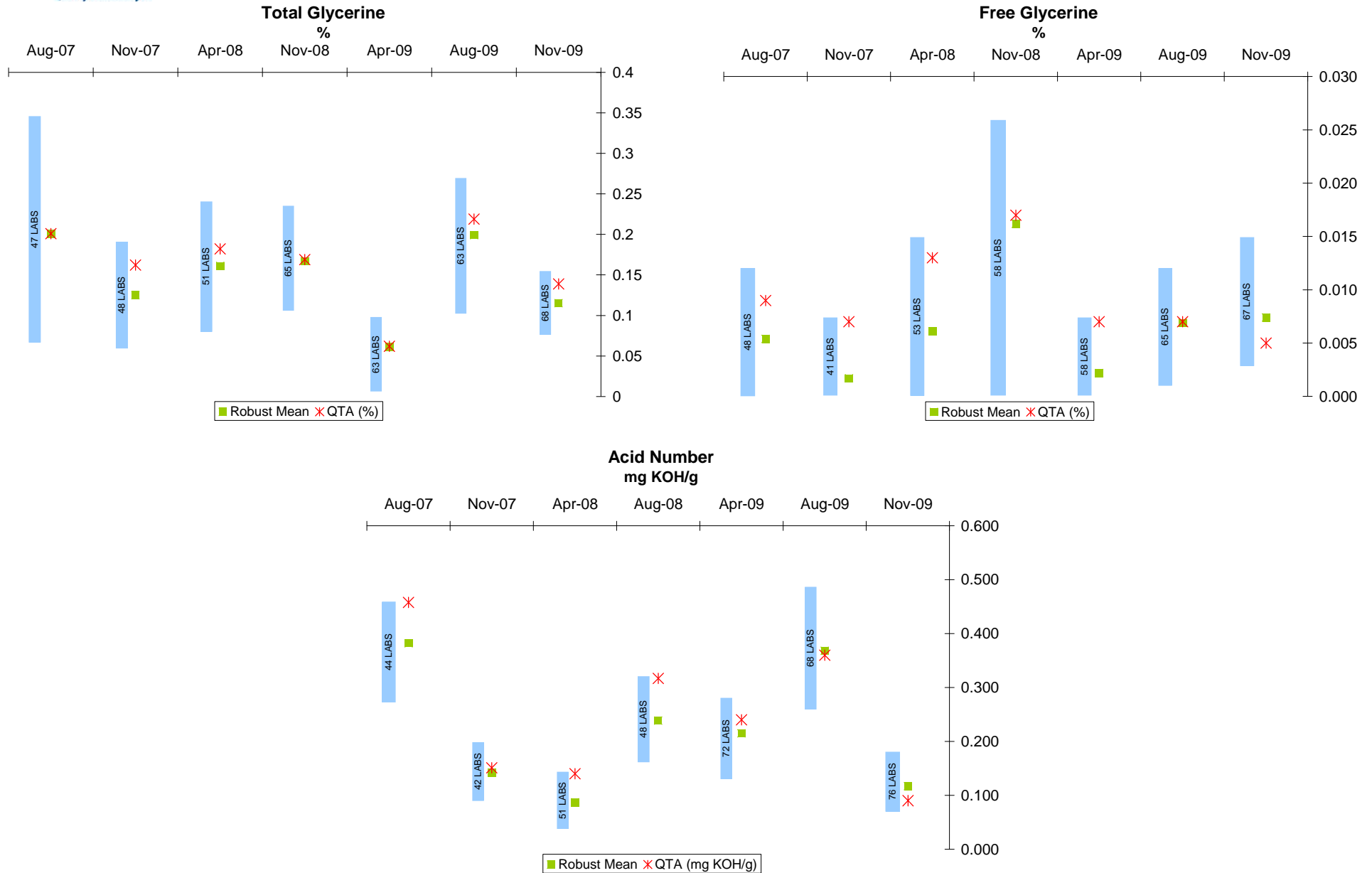
The following series of graphs provides three results for each sample and each test:

- The blue bar represents the range of results from the participating labs. You can see that the range is often very large, indicating high variability of the ASTM method
- The green square point is the robust mean of the consolidated results from all of the labs. (note that labs who submit points that are outliers are excluded in the calculation of the mean and in the range)
- The star point is the QTA result





The QTA® System participation in ASTM's Interlaboratory Crosscheck Program



To learn more about the ASTM ILCP Program and the protocol followed: <http://www.astm.org/STATQA/aboutptp.html>



identifying value . . . preserving value

4900 Este Avenue • Cincinnati, OH 45232-1419 • 1-866-yourQTA • fax: 1-513-482-3172 • help@qta.com • www.qta.com